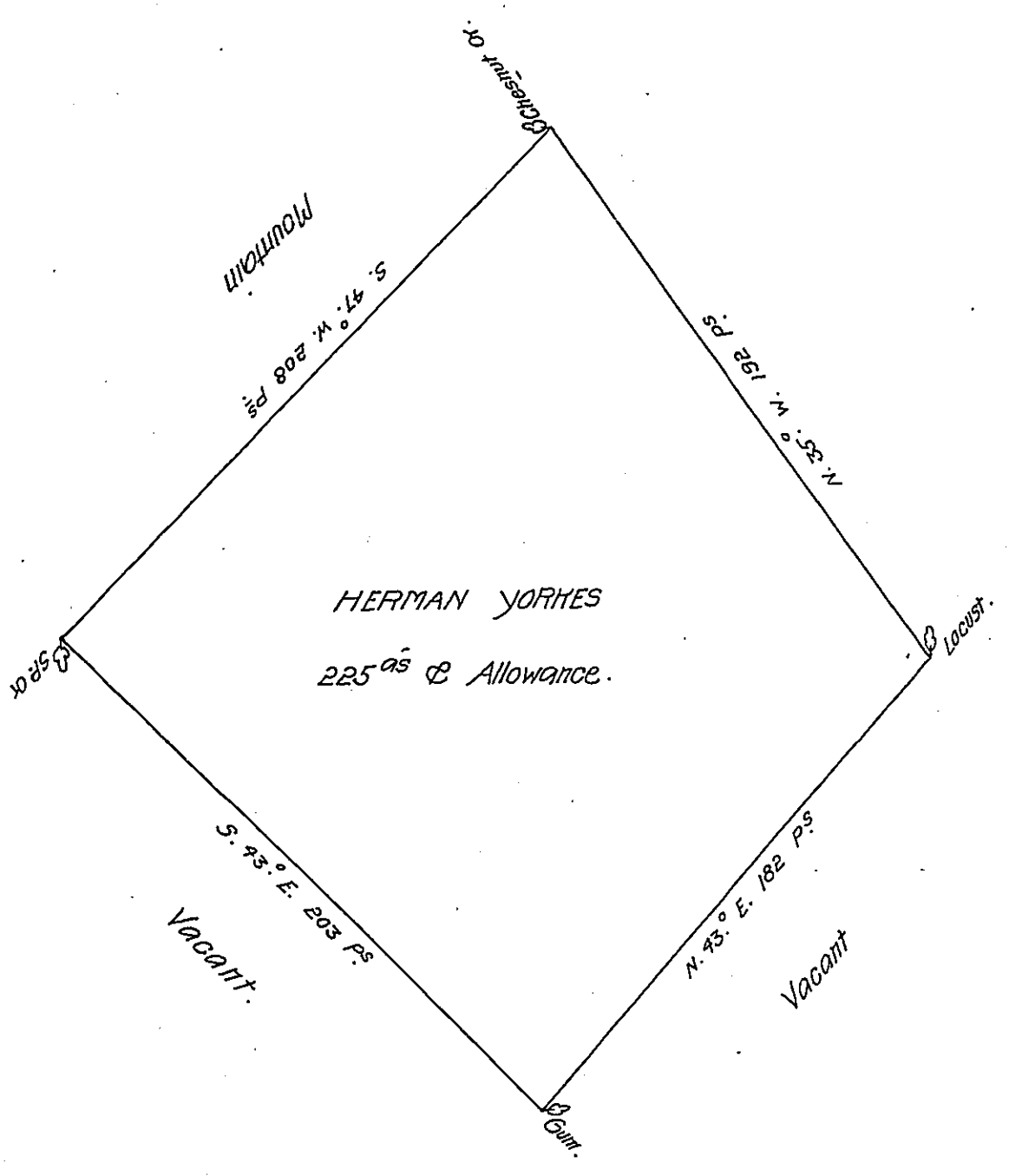


FORM No 1.



A Draught of a Tract of Land Situate in Letterkenny Township Cumberland County containing
 Two Hundred & Twenty five Acres & the usual Allowance of Six Acres P. Cent for Roads &c.
 Surveyd for Herman Yorhes the 12th Day of March 1767 in Pursuance of an Order of Survey
 Dated the first Day of August 1766. No 139.

To John Lutens Esq^r } John Armstrong D. S.
 Surveyor General. }

IN TESTIMONY that the above is a copy of the original remaining on file in
 the Department of Internal Affairs of Pennsylvania, made
 conformably to an Act of Assembly approved the 16th day of
 February, 1833, I have hereunto set my Hand and caused
 the Seal of said Department to be affixed at Harrisburg,
 this twentieth day of July 1908.

Henry Houder
 Secretary of Internal Affairs.